



AQUALINA

R E S I D E N C E

Aqualina

ein mediterranes Juwel

Lage: Karşıyaka,
20 Minuten westlich von Girne
400 Meter zur sandigen Küste

Größe: 22.000 qm Land
104 Wohneinheiten
26 Blocks mit je 4 Apartments
48 1+1 Apartments & Penthouses
56 2+1 Apartments & Penthouses



Ausstattung



Gemeinschafts
Pool



Yoga



Garten



Meerblick



Restaurant



Olympischer
Pool



Spa & Hamam



Spielplatz



Minigolf



Tennis



Beachclub



Fitnesscenter

A photograph of a modern resort building with a swimming pool and lounge area. The building is white with large windows and balconies. The pool is blue and surrounded by a stone wall. There are lounge chairs and umbrellas near the pool. The background shows a hillside with trees and a clear sky.

Service

Concierge-service

Security-service

Shuttle service zum privaten
Beachclub

Management Büro

Wartungs-service

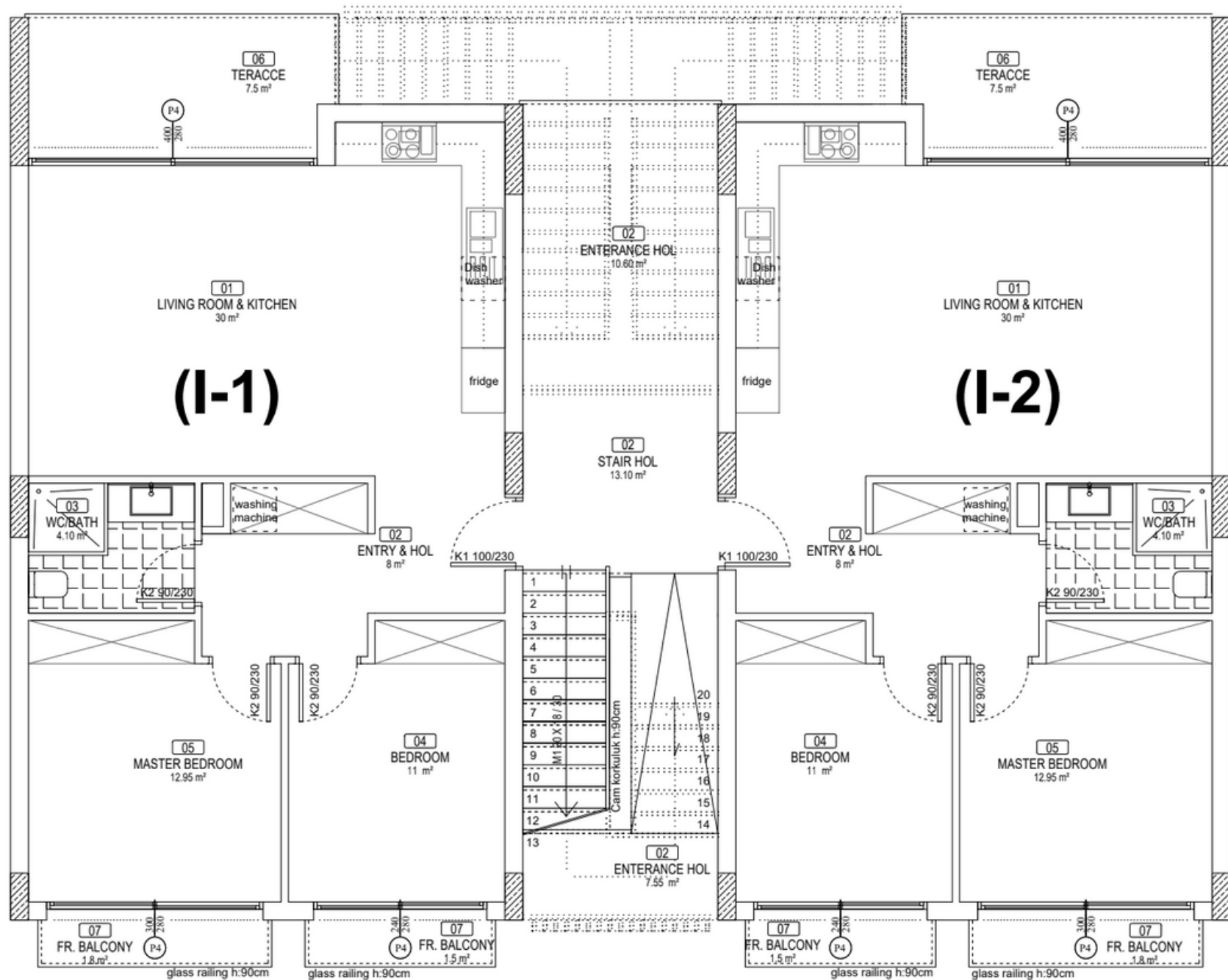
Innenaustattung

Stromgenerator

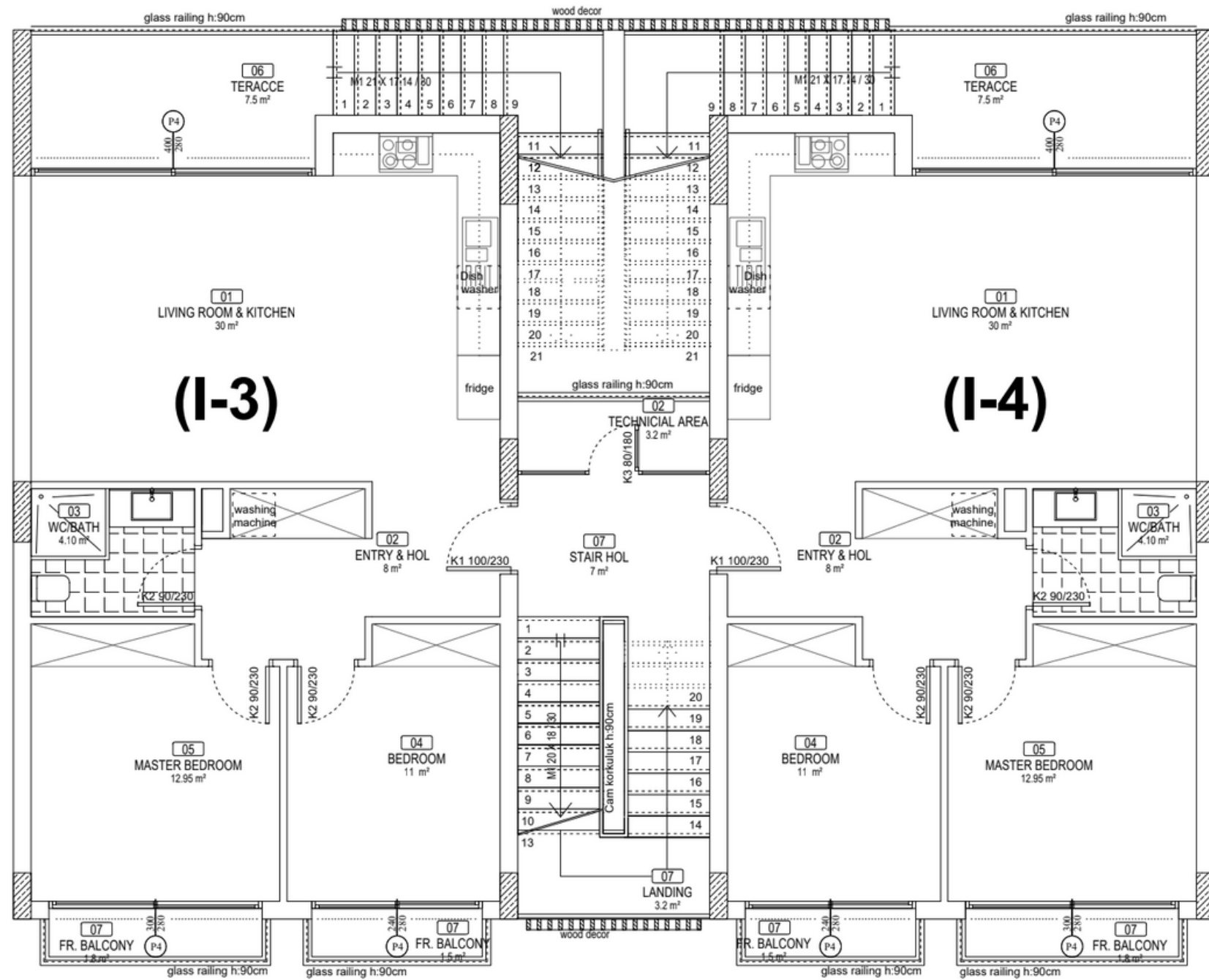
Type 1

Erdgeschoss

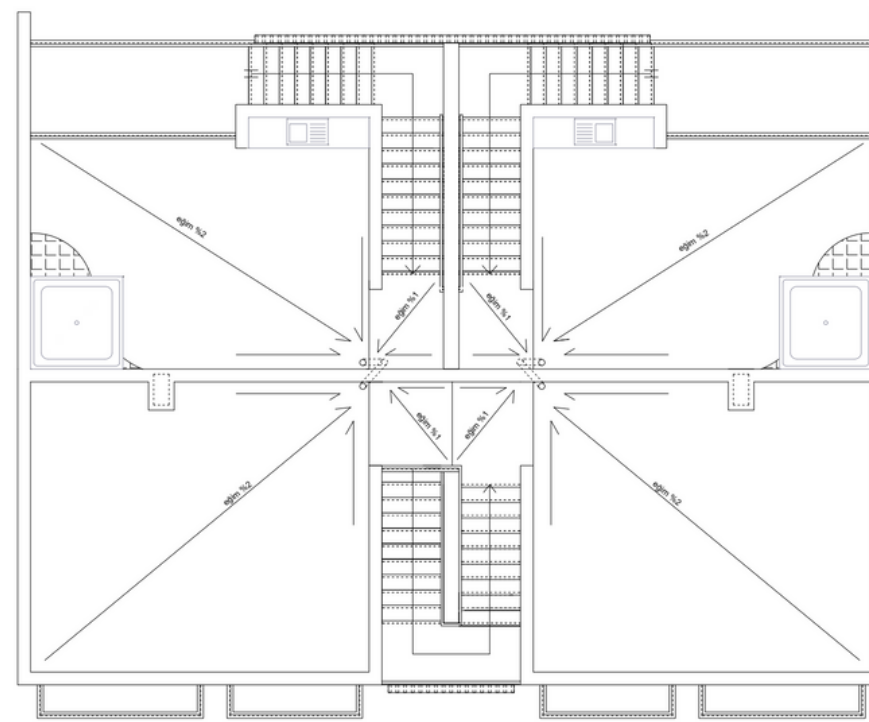
2+1 Privater Garten, privater Pool



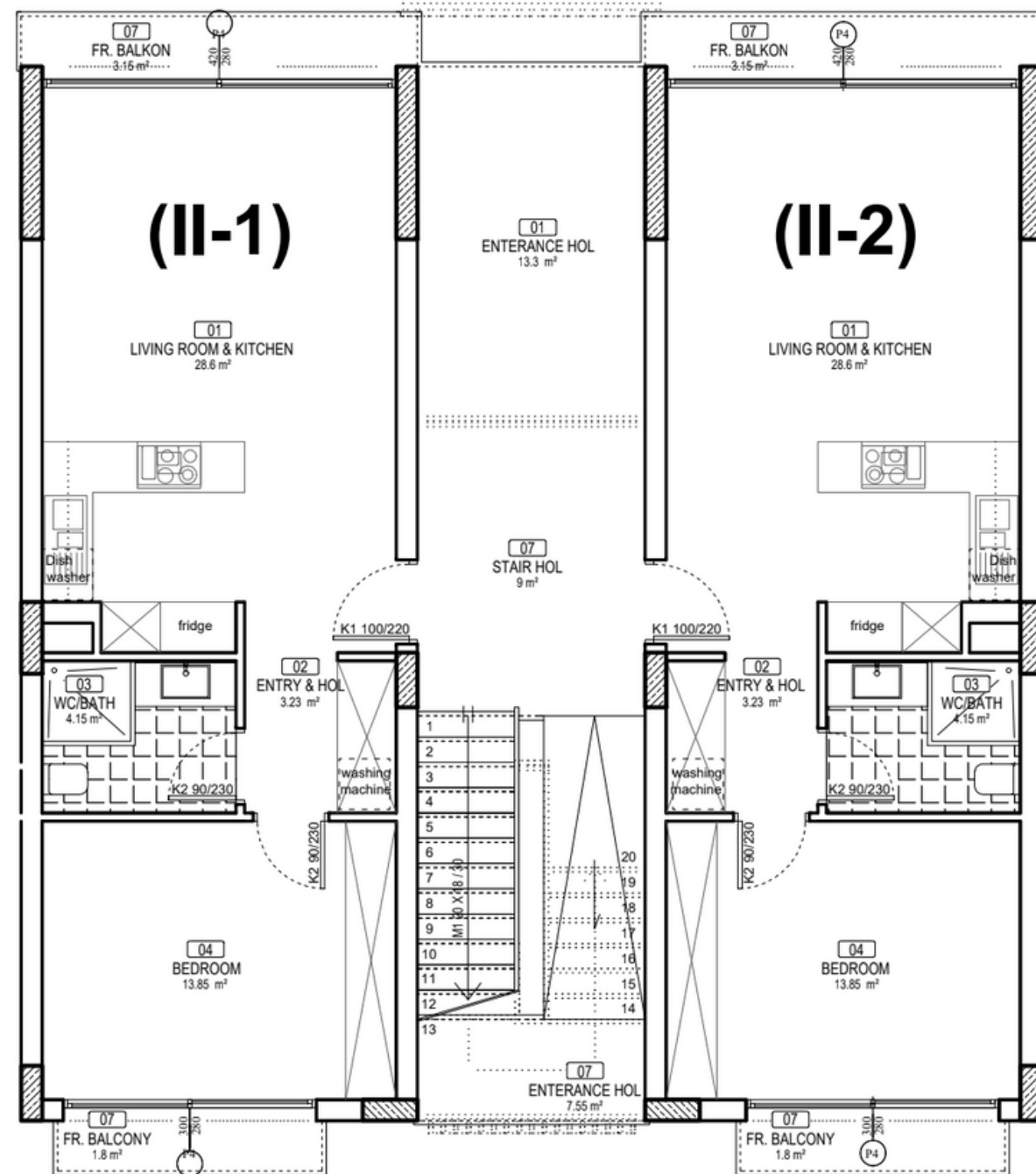
Type 1



Penthouse
Dachterrasse, Jacuzzi
2+1



Type 2

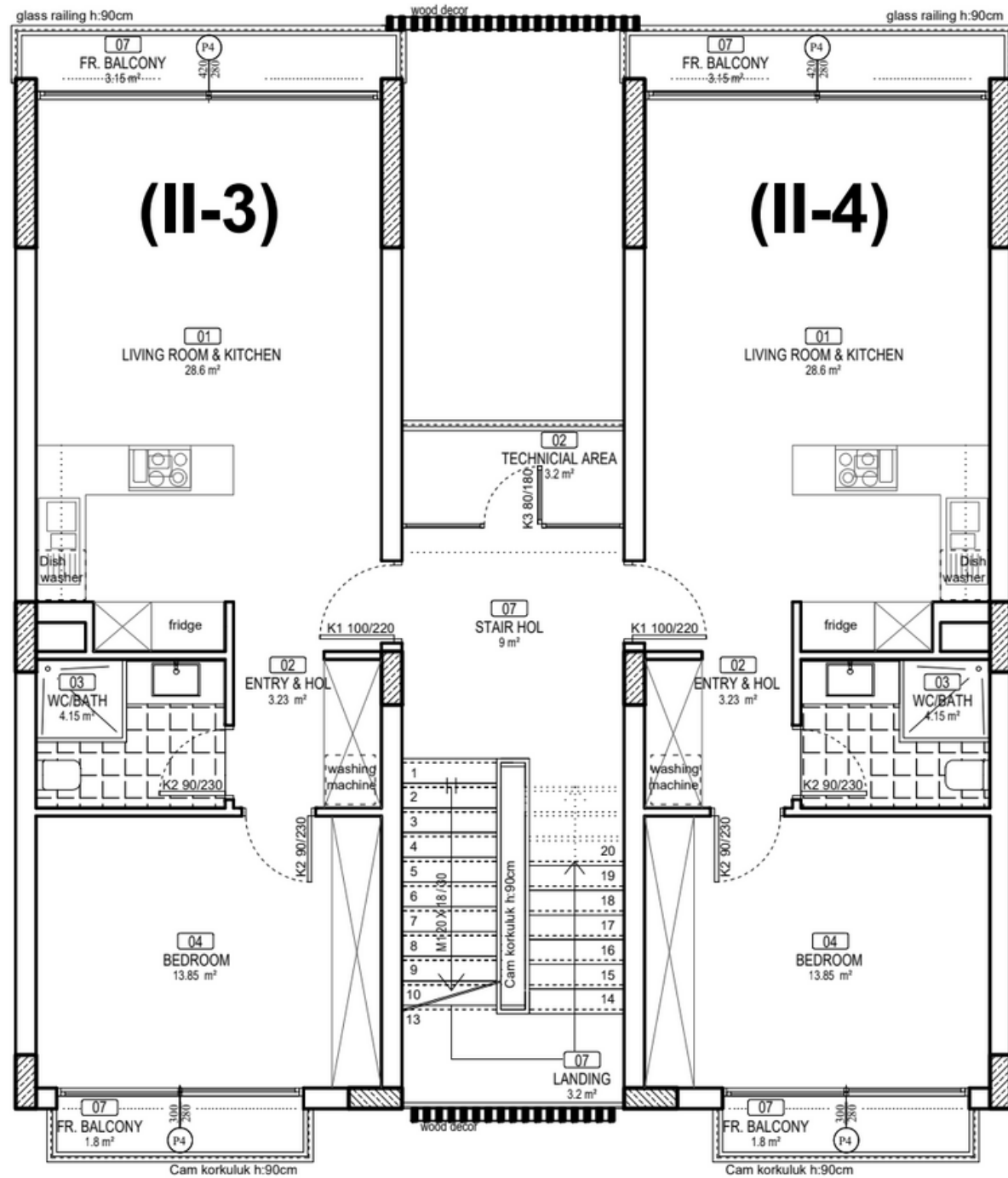


Erdgeschoss

1+1 Privater Garten, privater Pool

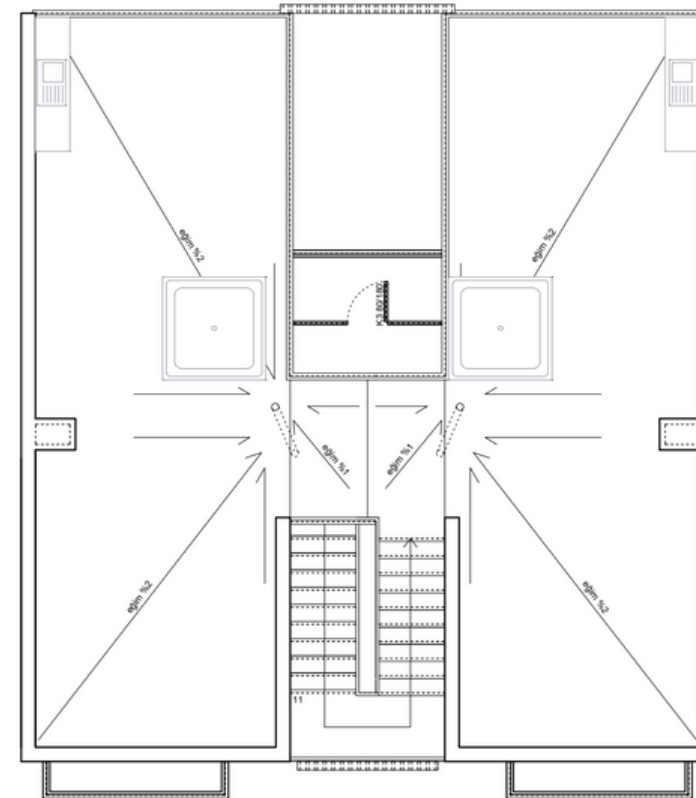


Type 2

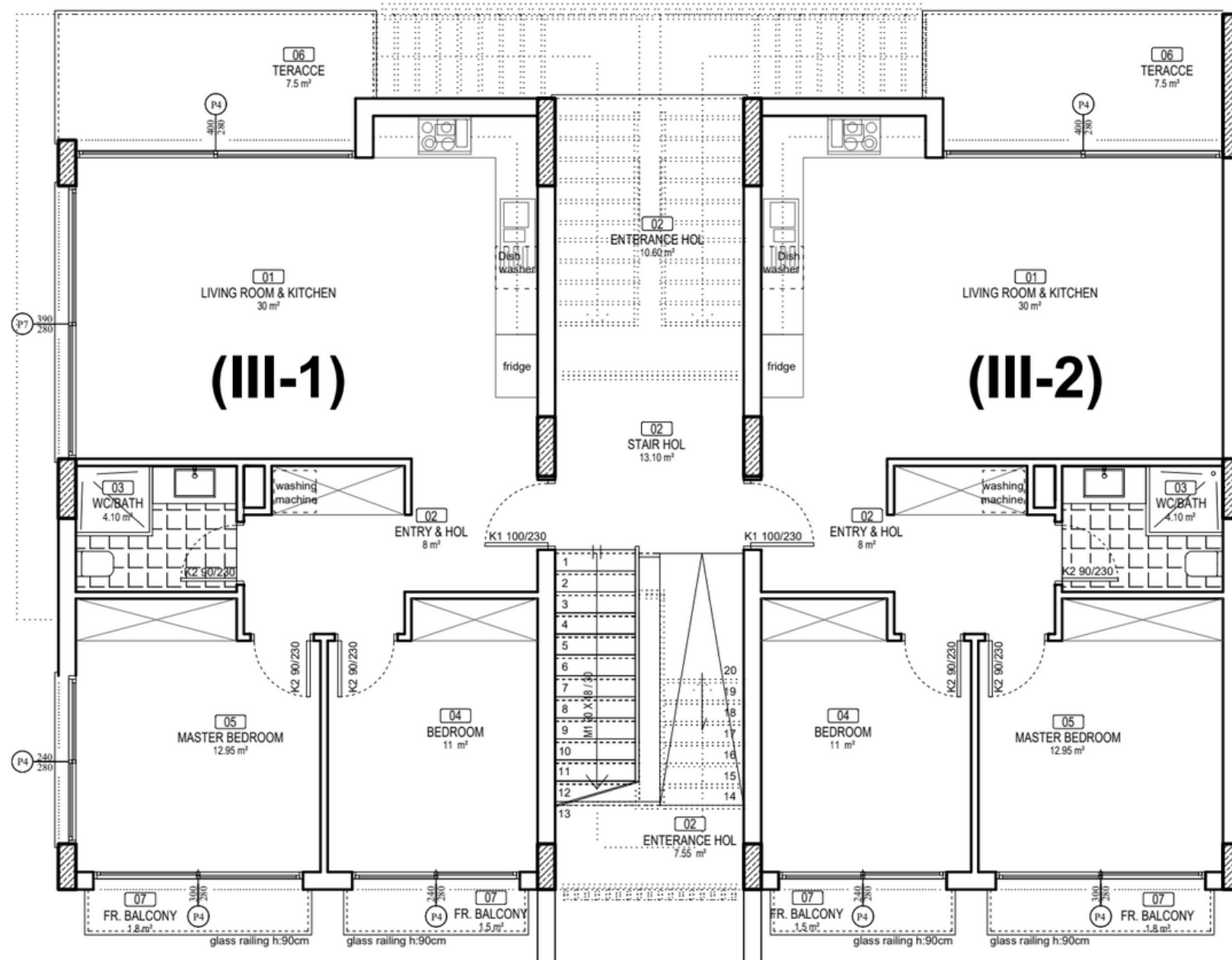


Penthouse
Dachterrasse, Jacuzzi

1+1



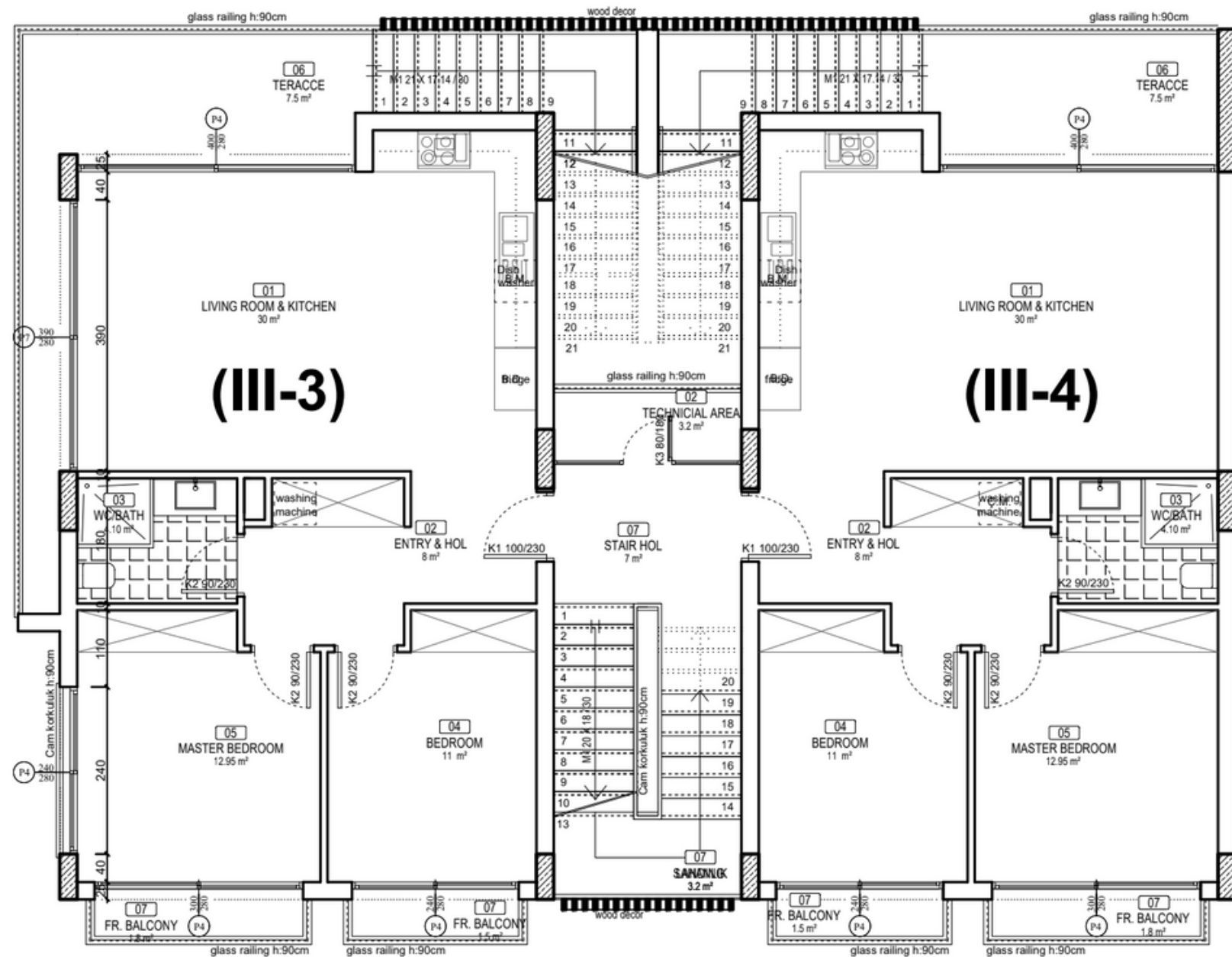
Type 3



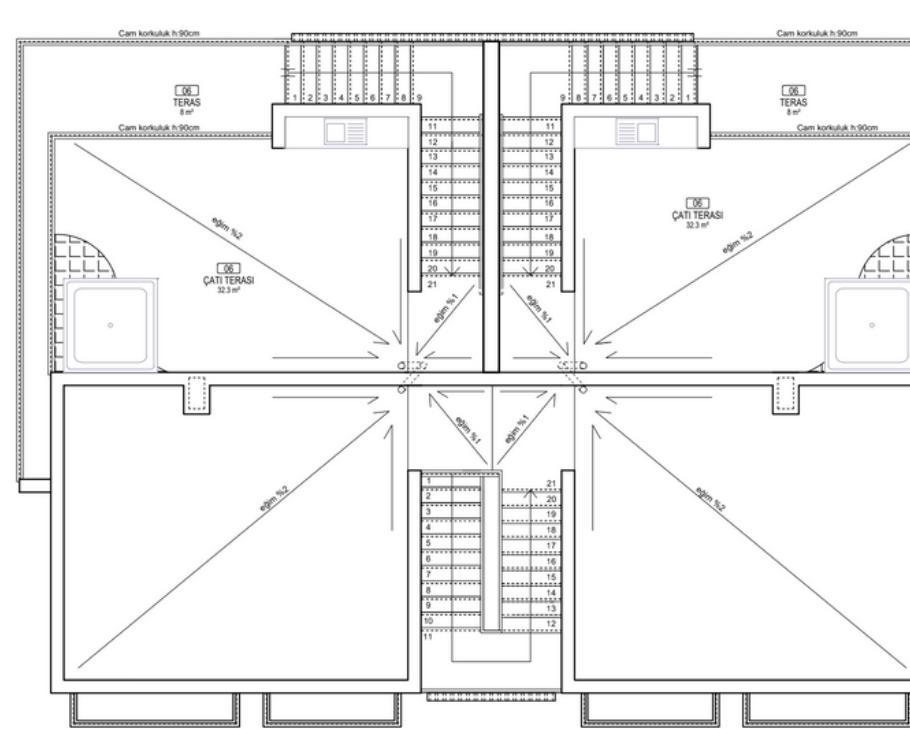
Erdgeschoss
2+1 Privater Garten



Type 3



Penthouse
Dachterrasse, Jacuzzi
2+1



Lageplan













Mietrendite

Schlafzimmer	AirBnB Durchschnitt	Monatlich 70% Auslastung	Durchschnittliche Miete bei 70% Auslastung	Durchschnittliche Miete bei 60% Auslastung	Durchschnittliche Rendite bei 60%	Monatl. Rendite bei 50%	Durchschnittliches Einkommen 50%
1+1	90 £	1.890 £	22.680 £	1.620 £	19.440 £	1.350 £	16.200 £
2+1	105 £	2.205 £	26.460 £	1.890 £	22.680 £	1.575 £	18.900 £

Preisliste

Floor Plan Type	Unit Type	Level	Gross Closed Area	Balcony	Private Garden	Roof Terrace	Pool	View	Total Usage Area	Price	
TYPE 3	Garden	G/F	80 m ²	20 m ²	45 m ²			Sea & Mountain	100 m ²	+ Private Garden	£215,000.00
TYPE 3	Penthouse	1	80 m ²	17 m ²		37 m ²		Sea & Mountain	134 m ²	Including Roof Terrace	/
TYPE 3	Penthouse	1	80 m ²	11 m ²		37 m ²		Sea & Mountain	128 m ²	Including Roof Terrace	£229,000.00
TYPE 2	Garden	G/F	60 m ²	17 m ²	18 m ²			Sea & Mountain	77 m ²	+ Private Garden	£139,000.00
TYPE 2	Garden	G/F	60 m ²	17 m ²	18 m ²			Sea & Mountain	77 m ²	+Private Garden	£139,000.00
TYPE 2	Penthouse	1	60 m ²	5 m ²		32 m ²		Sea & Mountain	97 m ²	Including Roof Terrace	£154,000.00
TYPE 2	Penthouse	1	60 m ²	5 m ²		32 m ²		Sea & Mountain	97 m ²	Including Roof Terrace	£154,000.00
TYPE 2	Garden	G/F	60 m ²	17 m ²	18 m ²			Pool & Courtyard	77 m ²	+ Private Garden	/
TYPE 2	Garden	G/F	60 m ²	17 m ²	18 m ²			Pool & Courtyard	77 m ²	+ Private Garden	£139,000.00
TYPE 2	Penthouse	1	60 m ²	5 m ²		32 m ²		Sea & Mountain	97 m ²	Including Roof Terrace	£154,000.00
TYPE 2	Penthouse	1	60 m ²	5 m ²		32 m ²		Sea & Mountain	97 m ²	Including Roof Terrace	£154,000.00
TYPE 1	Garden	G/F	80 m ²	20 m ²	45 m ²			Pool & Courtyard	100 m ²	+ Private Garden	£215,000.00
TYPE 1	Garden	G/F	80 m ²	20 m ²	45 m ²			Pool & Courtyard	100 m ²	+ Private Garden	£215,000.00
TYPE 1	Penthouse	1	80 m ²	11 m ²		37 m ²		Sea & Mountain	128 m ²	Including Roof Terrace	£229,000.00
TYPE 1	Penthouse	1	80 m ²	11 m ²		37 m ²		Sea & Mountain	128 m ²	Including Roof Terrace	£229,000.00
TYPE 2	Garden	G/F	60 m ²	17 m ²	18 m ²			Pool & Courtyard	77 m ²	+ Private Garden	£139,000.00
TYPE 2	Garden	G/F	60 m ²	17 m ²	18 m ²			Pool & Courtyard	77 m ²	+Private Garden	£139,000.00
TYPE 2	Penthouse	1	60 m ²	5 m ²		32 m ²		Sea & Mountain	97 m ²	Including Roof Terrace	£154,000.00
TYPE 2	Penthouse	1	60 m ²	5 m ²		32 m ²		Sea & Mountain	97 m ²	Including Roof Terrace	£154,000.00

Fertigstellung : Ende 2025

Preisliste

41	C1	1	2+1	TYPE 3	Garden	G/F	80 m ²	20 m ²	43 m ²		Sea & Mountain	100 m ²	+ Private Garden	/
42	C1	2	2+1	TYPE 3	Garden	G/F	80 m ²	20 m ²	43 m ²		Sea & Mountain	100 m ²	+Private Garden	£215,000.00
43	C1	3	2+1	TYPE 3	Penthouse	1	80 m ²	17 m ²		37 m ²	Sea & Mountain	134 m ²	Including Roof Terrace	/
44	C1	4	2+1	TYPE 3	Penthouse	1	80 m ²	11 m ²		37 m ²	Sea & Mountain	128 m ²	Including Roof Terrace	/
45	C2	1	1+1	TYPE 2	Garden	G/F	60 m ²	17 m ²	17 m ²		Sea & Mountain	77 m ²	+ Private Garden	£139,000.00
46	C2	2	1+1	TYPE 2	Garden	G/F	60 m ²	17 m ²	17 m ²		Sea & Mountain	77 m ²	+ Private Garden	£139,000.00
47	C2	3	1+1	TYPE 2	Penthouse	1	60 m ²	5 m ²		32 m ²	Sea & Mountain	97 m ²	Including Roof Terrace	£154,000.00
48	C2	4	1+1	TYPE 2	Penthouse	1	60 m ²	5 m ²		32 m ²	Sea & Mountain	97 m ²	Including Roof Terrace	£154,000.00
49	C3	1	1+1	TYPE 2	Garden	G/F	60 m ²	17 m ²	17 m ²		Pool & Courtyard	77 m ²	+ Private Garden	£139,000.00
50	C3	2	1+1	TYPE 2	Garden	G/F	60 m ²	17 m ²	17 m ²		Pool & Courtyard	77 m ²	+ Private Garden	£139,000.00
51	C3	3	1+1	TYPE 2	Penthouse	1	60 m ²	5 m ²		32 m ²	Sea & Mountain	97 m ²	Including Roof Terrace	£154,000.00
52	C3	4	1+1	TYPE 2	Penthouse	1	60 m ²	5 m ²		32 m ²	Sea & Mountain	97 m ²	Including Roof Terrace	£154,000.00
53	C4	1	2+1	TYPE 1	Garden	G/F	80 m ²	20 m ²	43 m ²		Pool & Courtyard	100 m ²	+ Private Garden	£215,000.00
54	C4	2	2+1	TYPE 1	Garden	G/F	80 m ²	20 m ²	43 m ²		Pool & Courtyard	100 m ²	+ Private Garden	£215,000.00
55	C4	3	2+1	TYPE 1	Penthouse	1	80 m ²	11 m ²		37 m ²	Sea & Mountain	128 m ²	Including Roof Terrace	£229,000.00
56	C4	4	2+1	TYPE 1	Penthouse	1	80 m ²	11 m ²		37 m ²	Sea & Mountain	128 m ²	Including Roof Terrace	£229,000.00
57	C5	1	1+1	TYPE 2	Garden	G/F	60 m ²	17 m ²	17 m ²		Pool & Courtyard	77 m ²	+ Private Garden	/
58	C5	2	1+1	TYPE 2	Garden	G/F	60 m ²	17 m ²	17 m ²		Pool & Courtyard	77 m ²	+ Private Garden	£134,000.00
59	C5	3	1+1	TYPE 2	Penthouse	1	60 m ²	5 m ²		32 m ²	Sea & Mountain	97 m ²	Including Roof Terrace	/
60	C5	4	1+1	TYPE 2	Penthouse	1	60 m ²	5 m ²		32 m ²	Sea & Mountain	97 m ²	Including Roof Terrace	£154,000.00

Fertigstellung : Ende 2025

Preisliste

61	D1	1	2+1	TYPE 3	Garden	G/F	80 m ²	20 m ²	46 m ²		Sea & Mountain	100 m ²	+ Private Garden	£215,000.00
62	D1	2	2+1	TYPE 3	Garden	G/F	80 m ²	20 m ²	69 m ²		Sea & Mountain	100 m ²	+ Private Garden	£215,000.00
63	D1	3	2+1	TYPE 3	Penthouse	1	80 m ²	17 m ²		37 m ²	Sea & Mountain	134 m ²	Including Roof Terrace	/
64	D1	4	2+1	TYPE 3	Penthouse	1	80 m ²	11 m ²		37 m ²	Sea & Mountain	128 m ²	Including Roof Terrace	£229,000.00
65	D2	1	2+1	TYPE 1	Garden	G/F	80 m ²	20 m ²	102 m ²		Pool & Courtyard	100 m ²	+ Private Garden	£215,000.00
66	D2	2	2+1	TYPE 1	Garden	G/F	80 m ²	20 m ²	105 m ²		Pool & Courtyard	100 m ²	+ Private Garden	£215,000.00
67	D2	3	2+1	TYPE 1	Penthouse	1	80 m ²	11 m ²		37 m ²	Sea & Mountain	128 m ²	Including Roof Terrace	£229,000.00
68	D2	4	2+1	TYPE 1	Penthouse	1	80 m ²	11 m ²		37 m ²	Sea & Mountain	128 m ²	Including Roof Terrace	£229,000.00
69	D3	1	2+1	TYPE 1	Garden	G/F	80 m ²	20 m ²	96 m ²		Pool & Courtyard	100 m ²	+ Private Garden	£215,000.00
70	D3	2	2+1	TYPE 1	Garden	G/F	80 m ²	20 m ²	90 m ²		Pool & Courtyard	100 m ²	+ Private Garden	/
71	D3	3	2+1	TYPE 1	Penthouse	1	80 m ²	11 m ²		37 m ²	Sea & Mountain	128 m ²	Including Roof Terrace	£229,000.00
72	D3	4	2+1	TYPE 1	Penthouse	1	80 m ²	11 m ²		37 m ²	Sea & Mountain	128 m ²	Including Roof Terrace	/
73	D4	1	2+1	TYPE 1	Garden	G/F	80 m ²	20 m ²	80 m ²		Pool & Courtyard	100 m ²	+ Private Garden	£215,000.00
74	D4	2	2+1	TYPE 1	Garden	G/F	80 m ²	20 m ²	74 m ²		Pool & Courtyard	100 m ²	+ Private Garden	£215,000.00
75	D4	3	2+1	TYPE 1	Penthouse	1	80 m ²	11 m ²		37 m ²	Sea & Mountain	128 m ²	Including Roof Terrace	£229,000.00
76	D4	4	2+1	TYPE 1	Penthouse	1	80 m ²	11 m ²		37 m ²	Sea & Mountain	128 m ²	Including Roof Terrace	£229,000.00
77	D5	1	1+1	TYPE 2	Garden	G/F	60 m ²	17 m ²	32 m ²		Pool & Courtyard	77 m ²	+ Private Garden	£139,000.00
78	D5	2	1+1	TYPE 2	Garden	G/F	60 m ²	17 m ²	33 m ²		Pool & Courtyard	77 m ²	+ Private Garden	/
79	D5	3	1+1	TYPE 2	Penthouse	1	60 m ²	5 m ²		32 m ²	Sea & Mountain	97 m ²	Including Roof Terrace	£154,000.00
80	D5	4	1+1	TYPE 2	Penthouse	1	60 m ²	5 m ²		32 m ²	Sea & Mountain	97 m ²	Including Roof Terrace	/
81	D6	1	1+1	TYPE 2	Garden	G/F	60 m ²	17 m ²	33 m ²		Pool & Courtyard	77 m ²	+ Private Garden	£134,000.00
82	D6	2	1+1	TYPE 2	Garden	G/F	60 m ²	17 m ²	32 m ²		Pool & Courtyard	77 m ²	+ Private Garden	£134,000.00
83	D6	3	1+1	TYPE 2	Penthouse	1	60 m ²	5 m ²		32 m ²	Sea & Mountain	97 m ²	Including Roof Terrace	/
84	D6	4	1+1	TYPE 2	Penthouse	1	60 m ²	5 m ²		32 m ²	Sea & Mountain	97 m ²	Including Roof Terrace	£154,000.00

Fertigstellung : Ende 2025

Preisliste

85	E1	1	2+1	TYPE 1	Garden	G/F	80 m ²	54 m ²	80 m ²		25 m ²	Pool & Courtyard	134 m ²	+6,4x3,4 Private Infinity Swimming Pool & Private Garden	£239,000.00
86	E1	2	2+1	TYPE 1	Garden	G/F	80 m ²	25 m ²	94 m ²		26 m ²	Pool & Courtyard	105 m ²	+6,4x3,4 Private Infinity Swimming Pool & Private Garden	£229,000.00
87	E1	3	2+1	TYPE 1	Penthouse	1	80 m ²	11 m ²		37 m ²		Sea & Mountain	128 m ²	+ Barbecue Roof Terrace & 6'8" x 7'4" - 6 Person Hot Tub	£244,000.00
88	E1	4	2+1	TYPE 1	Penthouse	1	80 m ²	11 m ²		37 m ²		Sea & Mountain	128 m ²	+ Barbecue Roof Terrace & 6'8" x 7'4" - 6 Person Hot Tub	£244,000.00
89	E2	1	1+1	TYPE 2	Garden	G/F	60 m ²	18 m ²	52 m ²		25 m ²	Sea & Mountain	77 m ²	+6,4x3,4 Private Infinity Swimming Pool & Private Garden	/
90	E2	2	1+1	TYPE 2	Garden	G/F	60 m ²	17 m ²	62 m ²		18 m ²	Sea & Mountain	77 m ²	+4,7 x 3,4 Private Infinity Swimming Pool & Private Garden	/
91	E2	3	1+1	TYPE 2	Penthouse	1	60 m ²	5 m ²		32 m ²		Sea & Mountain	97 m ²	+ Barbecue Roof Terrace & 6'8" x 7'4" - 6 Person Hot Tub	£169,000.00
92	E2	4	1+1	TYPE 2	Penthouse	1	60 m ²	5 m ²		32 m ²		Sea & Mountain	97 m ²	+4,7x3,4 Private Infinity Swimming Pool & Private Garden	/
93	E3	1	2+1	TYPE 1	Garden	G/F	80 m ²	54 m ²	75 m ²		25 m ²	Sea & Mountain	134 m ²	+6,4x3,4 Private Infinity Swimming Pool & Private Garden	£239,000.00
94	E3	2	2+1	TYPE 1	Garden	G/F	80 m ²	25 m ²	98 m ²		26 m	Sea & Mountain	105 m ²	6,4x3,4 Private Infinity Swimming Pool & Private Garden	£229,000.00
95	E3	3	2+1	TYPE 1	Penthouse	1	80 m ²	11 m ²		37 m ²		Sea & Mountain	128 m ²	+ Barbecue Roof Terrace & 6'8" x 7'4" - 6 Person Hot Tub	/
96	E3	4	2+1	TYPE 1	Penthouse	1	80 m ²	11 m ²		37 m ²		Sea & Mountain	128 m ²	+ Barbecue Roof Terrace & 6'8" x 7'4" - 6 Person Hot Tub	£244,000.00
97	E4	1	1+1	TYPE 2	Garden	G/F	60 m ²	18 m ²	52 m ²		25 m ²	Sea & Mountain	77 m ²	+6,4x3,4 Private Infinity Swimming Pool & Private Garden	/
98	E4	2	1+1	TYPE 2	Garden	G/F	60 m ²	17 m ²	62 m ²		18 m ²	Sea & Mountain	77 m ²	+6,4x3,4 Private Infinity Swimming Pool & Private Garden	/
99	E4	3	1+1	TYPE 2	Penthouse	1	60 m ²	5 m ²		32 m ²		Sea & Mountain	97 m ²	+ Barbecue Roof Terrace & 6'8" x 7'4" - 6 Person Hot Tub	£169,000.00
100	E4	4	1+1	TYPE 2	Penthouse	1	60 m ²	5 m ²		32 m ²		Sea & Mountain	97 m ²	+ Barbecue Roof Terrace & 6'8" x 7'4" - 6 Person Hot Tub	£169,000.00
101	E5	1	2+1	TYPE 1	Garden	G/F	80 m ²	54 m ²	75 m ²		25 m ²	Pool & Courtyard	134 m ²	+6,4x3,4 Private Infinity Swimming Pool & Private Garden	£239,000.00
102	E5	2	2+1	TYPE 1	Garden	G/F	80 m ²	25 m ²	174 m ²		26 m ²	Pool & Courtyard	105 m ²	+6,4x3,4 Private Infinity Swimming Pool & Private Garden	/
103	E5	3	2+1	TYPE 1	Penthouse	1	80 m ²	11 m ²		37 m ²		Sea & Mountain	128 m ²	+ Barbecue Roof Terrace & 6'8" x 7'4" - 6 Person Hot Tub	£244,000.00
104	E5	4	2+1	TYPE 1	Penthouse	1	80 m ²	11 m ²		37 m ²		Sea & Mountain	128 m ²	+ Barbecue Roof Terrace & 6'8" x 7'4" - 6 Person Hot Tub	£244,000.00

Fertigstellung : Ende 2025



Konstantin Leorda
+49(0)170-4372143
info@leorda.de

